



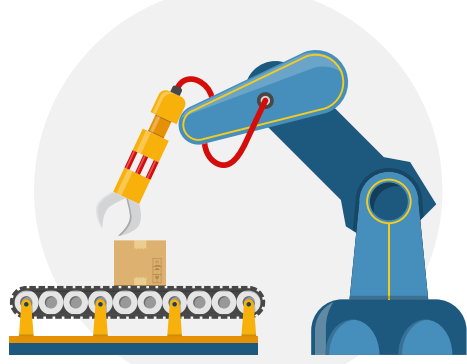
# TRACK & TRACE

Mission critical. No longer optional.

## Why Microsoft and Sight Machine?



### Granular Production Process Tracking



Track impacts of variance in all production processes. Match to both or part.

### End-to-End Traceability



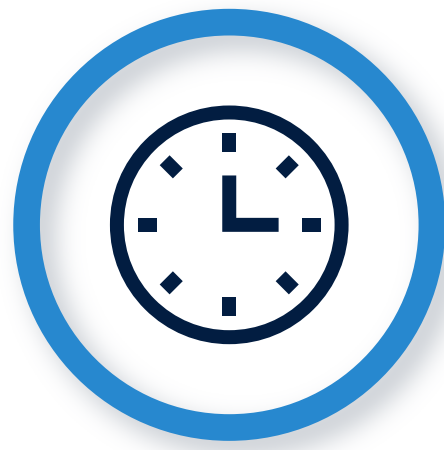
Trace everything - from downstream materials to production processes to upstream customer quality.

### Better Compliance & Reduced Risk



Visualize and automate compliance process. Surface risk for better mitigation.

## See Everything, Everywhere.



Teams need total visibility into production to map defects back to batches, plants and machines.



Engineers can root-cause problems and identify other affected batches.



Businesses can use tracking data to assess supplier risk, improve planning, and boost productivity.

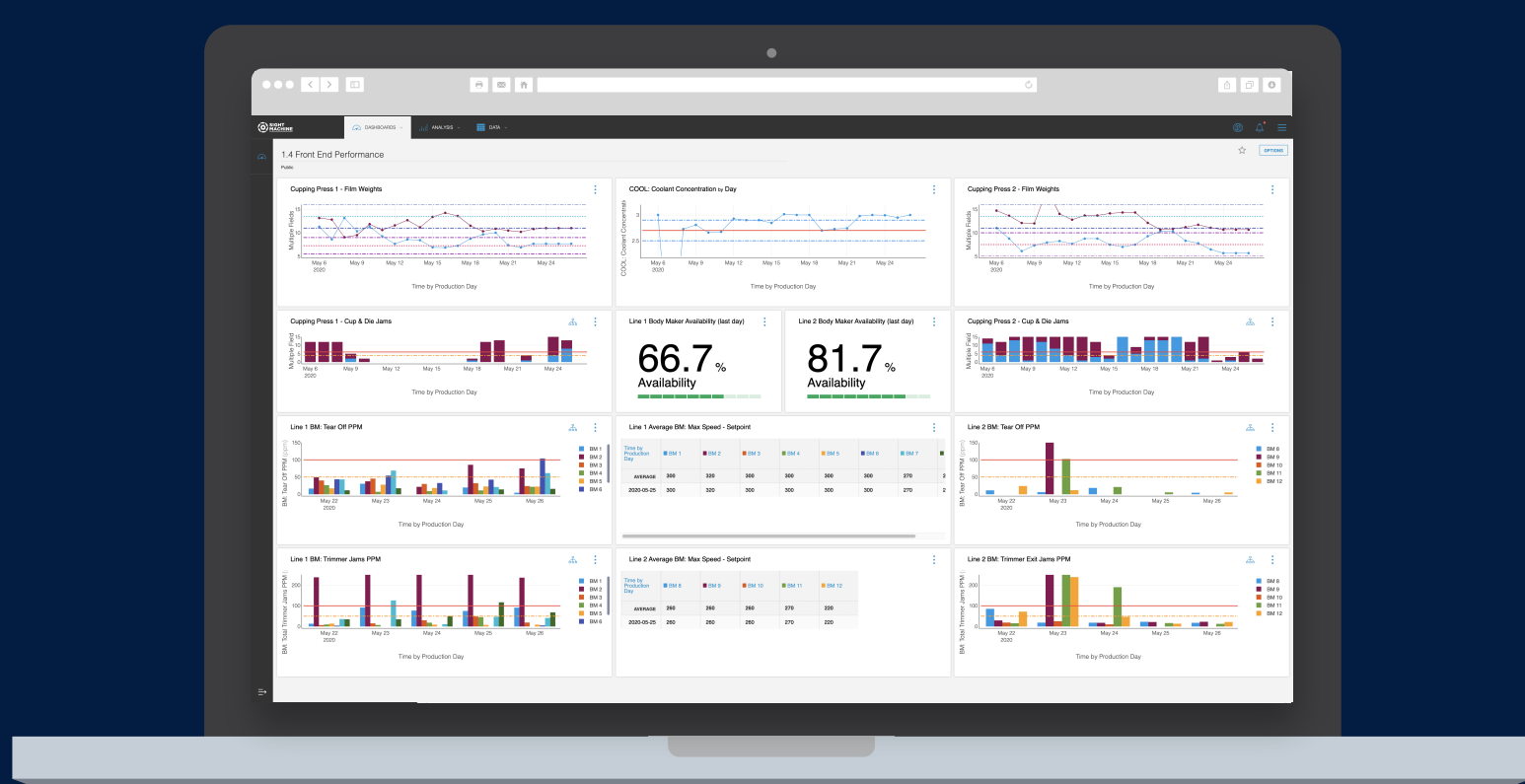


## Checklist for Success

Cloud and data-powered track-and-trace: Scalable supply chain compliance solutions -> optimized with



Track-and-Trace: On mobile and desktop -> Sight Machine's tracking dashboard



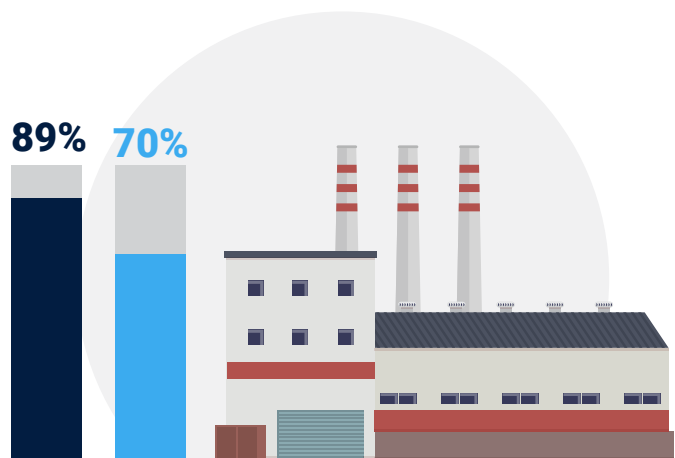
**Identify** everything you need to track: suppliers, internal production assets and processes, and downstream customers.



**Connect and integrate** supply chain management and ERP to production process data and downstream quality systems.



**Create** track-and-trace dashboards and playbooks for your quality, compliance and production teams.



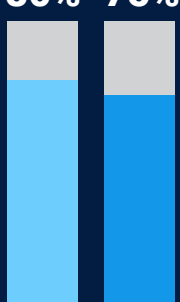
"While **89 percent** of responding manufacturers perceive a single view of the supply chain as a key priority, **70%** have no end-to-end visibility into the plant"



"**57%** manufacturers identify integrating data as the biggest challenge towards developing AI" (MIT AI agenda 2020)



80% 75%



"Manufacturers state securing meaningful intelligence from their end-to-end supply chain as a challenge (**80%**), dealing with real-time information (**75%**) and the ability to deal with the intelligence - as significant hurdles that need to be overcome" (Zetes, November 2017)



See how Microsoft and Sight Machine help Global 500 manufacturers improve profitability, productivity, and sustainability with production data across the enterprise.

[sightmachine.com/partners/microsoft](https://sightmachine.com/partners/microsoft) | 1.888.461.5739